



# Vision Trimline Gas Appliance **fireplace with chimney fan**

Freedom of design with an Exodraft chimney fan



vision  
trimline

| exodraft





## Facts about Exodraft fans



### Freedom of design

Vertical and horizontal flue runs with multiple elbows.



### Better combustion

Optimal draught to fireplace in all weather conditions.



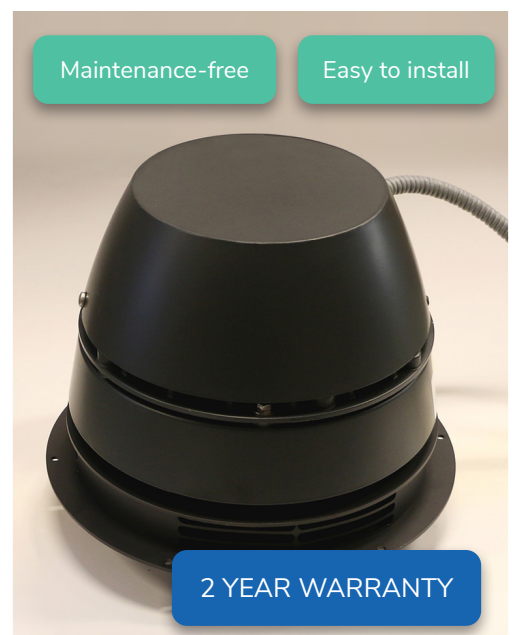
### Increased safety

Constant monitoring of flow and automatic shutdown.  
Approved according to Gas Appliance Directive.



### Attractive design

All fans have a compact form factor and a sleek design.  
Pick your colour.



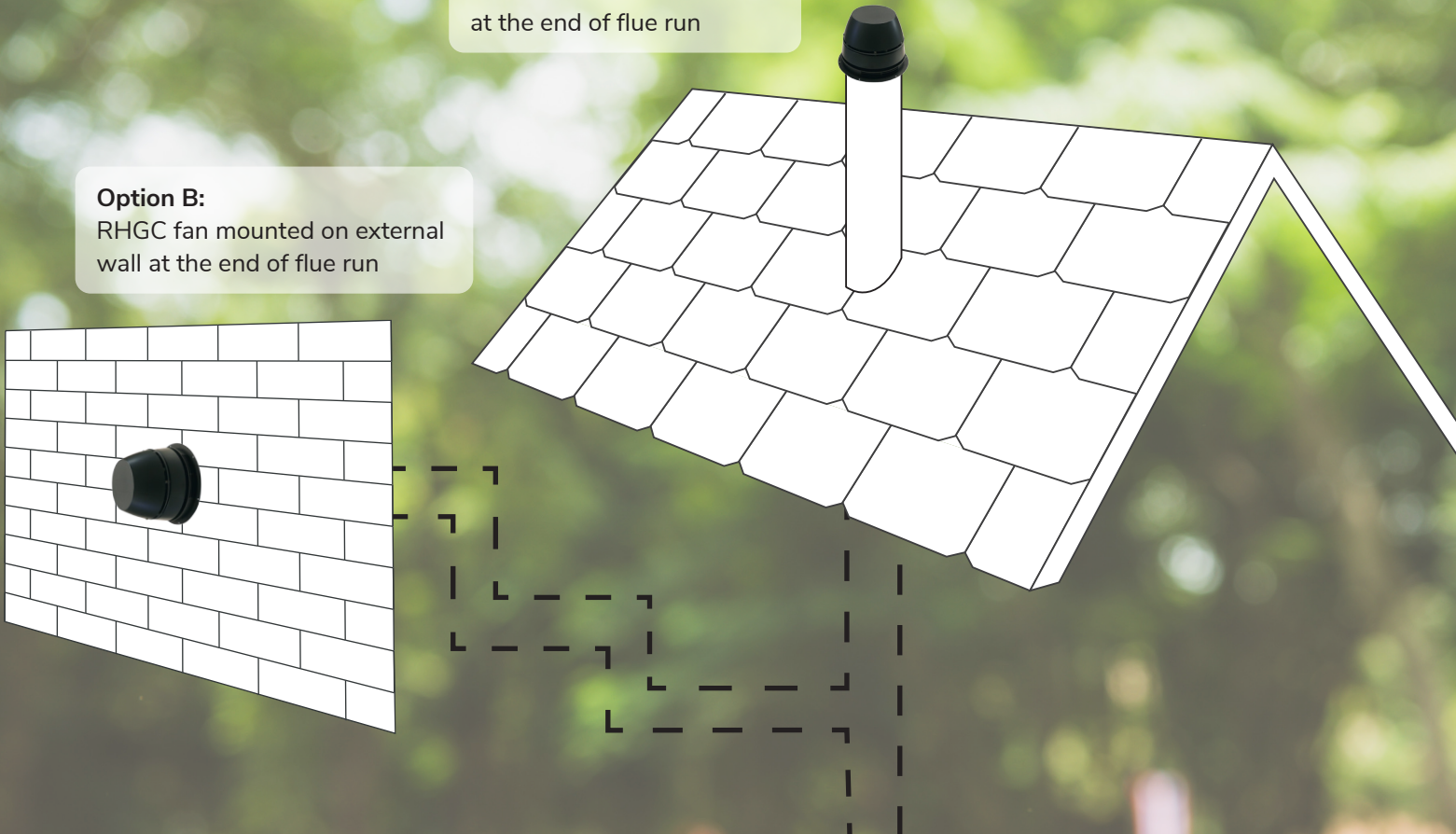
Available in all RAL colours on request





**Option A:**  
RHGC fan mounted on roof  
at the end of flue run

**Option B:**  
RHGC fan mounted on external  
wall at the end of flue run





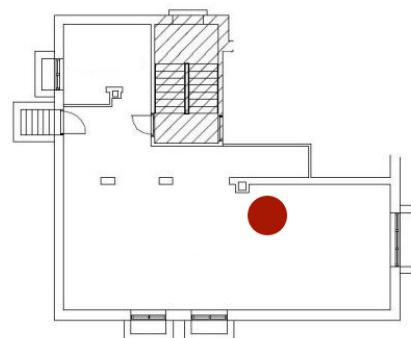
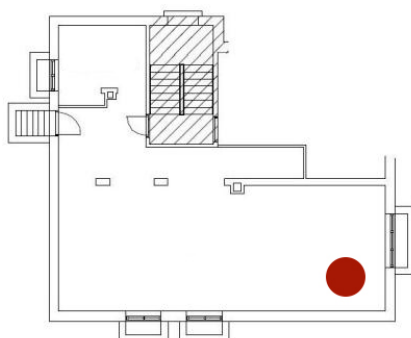
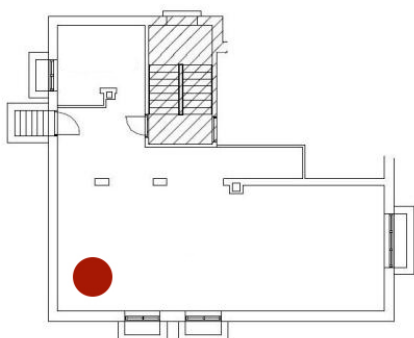


## More options for fireplace placement

With the possibility of both vertical and horizontal flue runs with multiple bends, the placement of your fireplace is no longer limited by the location of your chimney.

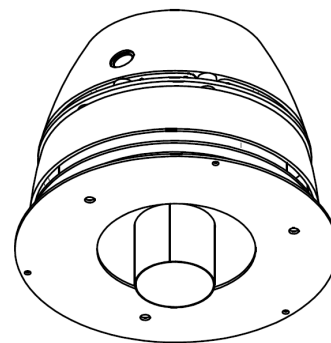
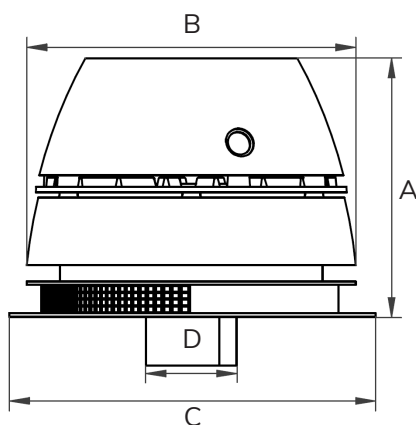


Vision Trimline Gas Fire



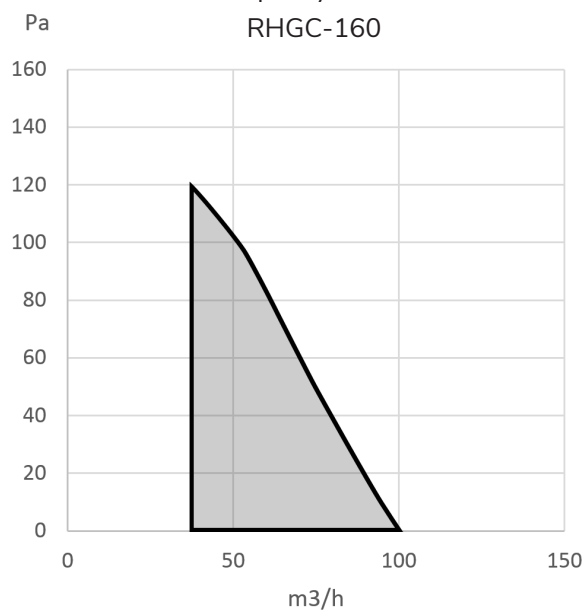
## Dimensions

A [mm]	227.5
B [mm]	290
C [mm]	323
D [mm]	80
Weight [kg]	10



## Technical Data

Capacity chart  
RHGC-160



The capacity chart is measured at a flue gas temperature of 20 °C. The fan capacity changes with temperature.

RPM	1400
Power supply [V]	1x230
Power consumption [kW]	0.09 *
Amp	0.4
Max. output of fireplace [kW]	13
Max. / min. flue length [m]	60 / 5
Inner / outer flue diameter [mm]	80 / 125
Max. number of flue elbows	15
Mounting position	Wall or roof
Fan control	EFC21



EFC21 control

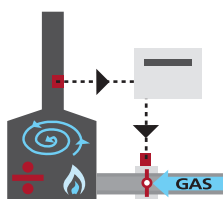
\* Effect at the motor shaft at ambient temperature 20 °C

## Freedom of choice with an Exodraft chimney fan

Exodraft is the only system on the market which has an approved fail-safe function.

An Exodraft chimney fan system gives you the freedom to choose a gas fireplace based on your needs rather than the limitations imposed by the building's design and construction.

### Enjoy the pleasure of balanced flue fire - also without a traditional chimney



#### Compliance

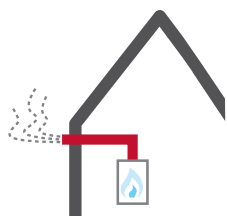
##### – a secure failsafe system

The chimney fan's control system automatically shuts off the gas if there is insufficient updraught in the chimney, always ensuring that your gas fire operates correctly. The Exodraft system is the only approved system currently available.



#### Consistent flue draught

The chimney fan system creates optimal updraught in your chimney regardless of wind and weather conditions, thus eliminating all down draught into your living room.



#### No chimney required

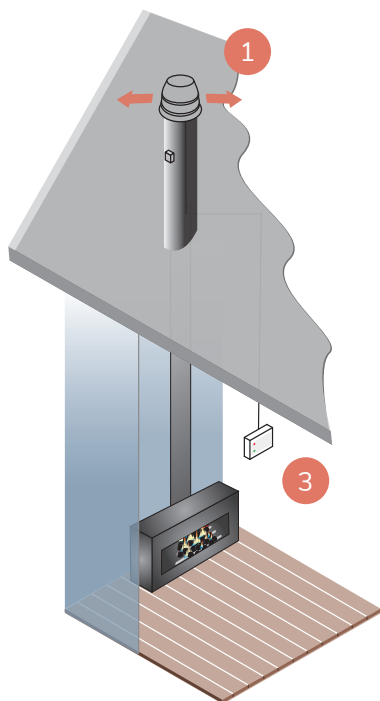
The chimney fan system works equally when installed on a traditional chimney or attached to an outside wall – giving you the freedom to choose the gas fireplace that suits your needs.



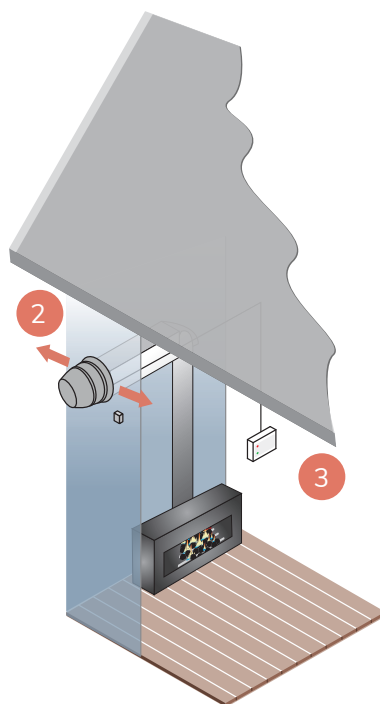
Combining the Exodraft fan with the stainless steel balanced flue system allows for a consistent monitoring for the flow of gases complimenting the already stable flame picture in the balanced chamber.

## Chimney fan systems – with or without a chimney

Exodraft chimney fan systems consist of the chimney fan, a gas controller and a gas solenoid valve.



Chimney fan system with horizontal extraction via a balanced flue chimney



Chimney fan system with extraction via an external wall where there is no chimney



The chimney fan has a horizontal discharge and can be mounted on a balanced flue chimney or an external wall.



3  
EFC21

The chimney fan controller ensures fail-safe control of your fire. When switched on a signal is sent to the chimney fan to create the optimal updraft in the chimney. When this is achieved the control system will allow gas into the gas fire enabling the gas fire to lit. Any reduction in the updraft will result in the gas supply being cut and the fireplace will switch off. This is the only system on the market that have attained the GASTEC approval in accordance with EN298.



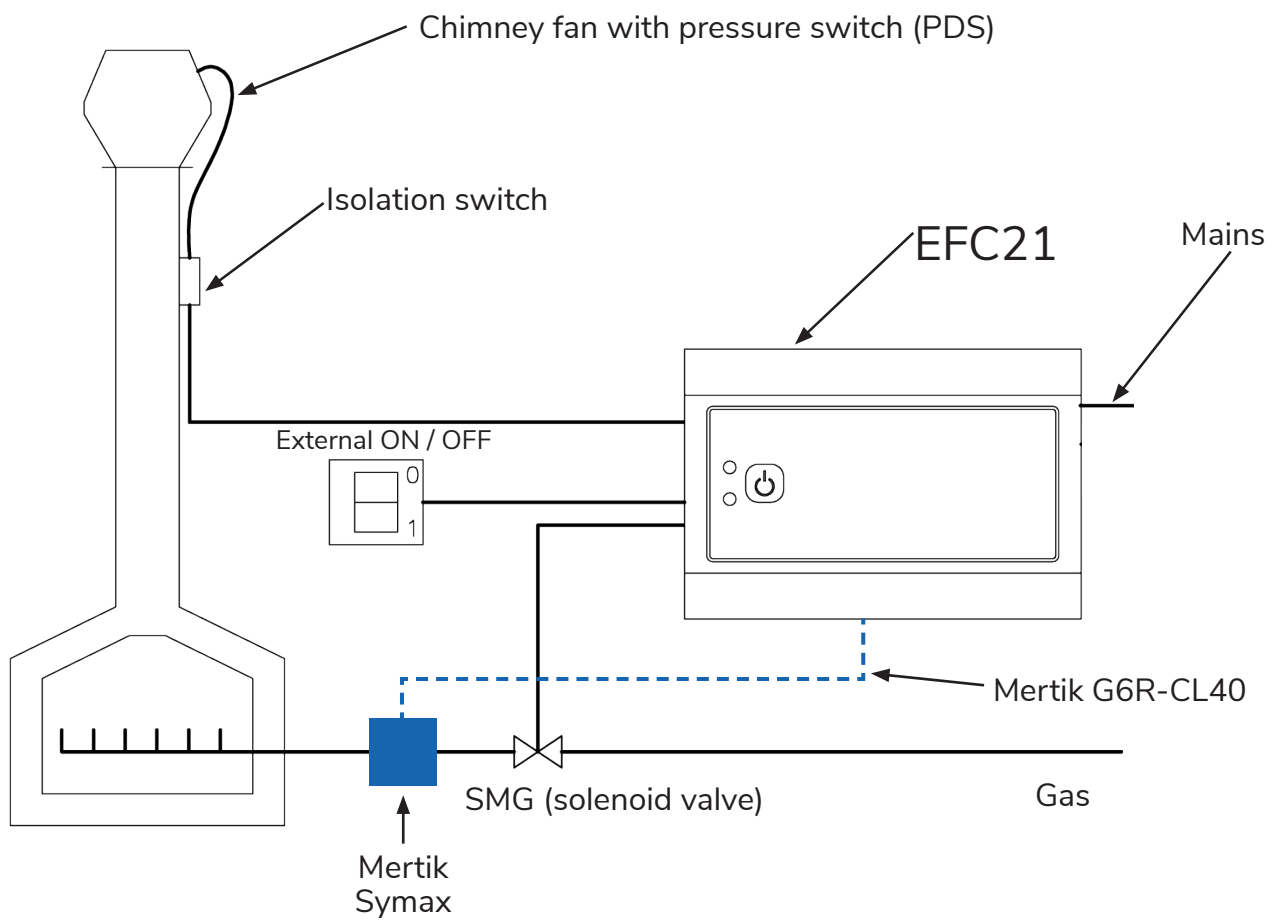
## Trimline balanced flue fires & Exodraft RHGC chimney fan



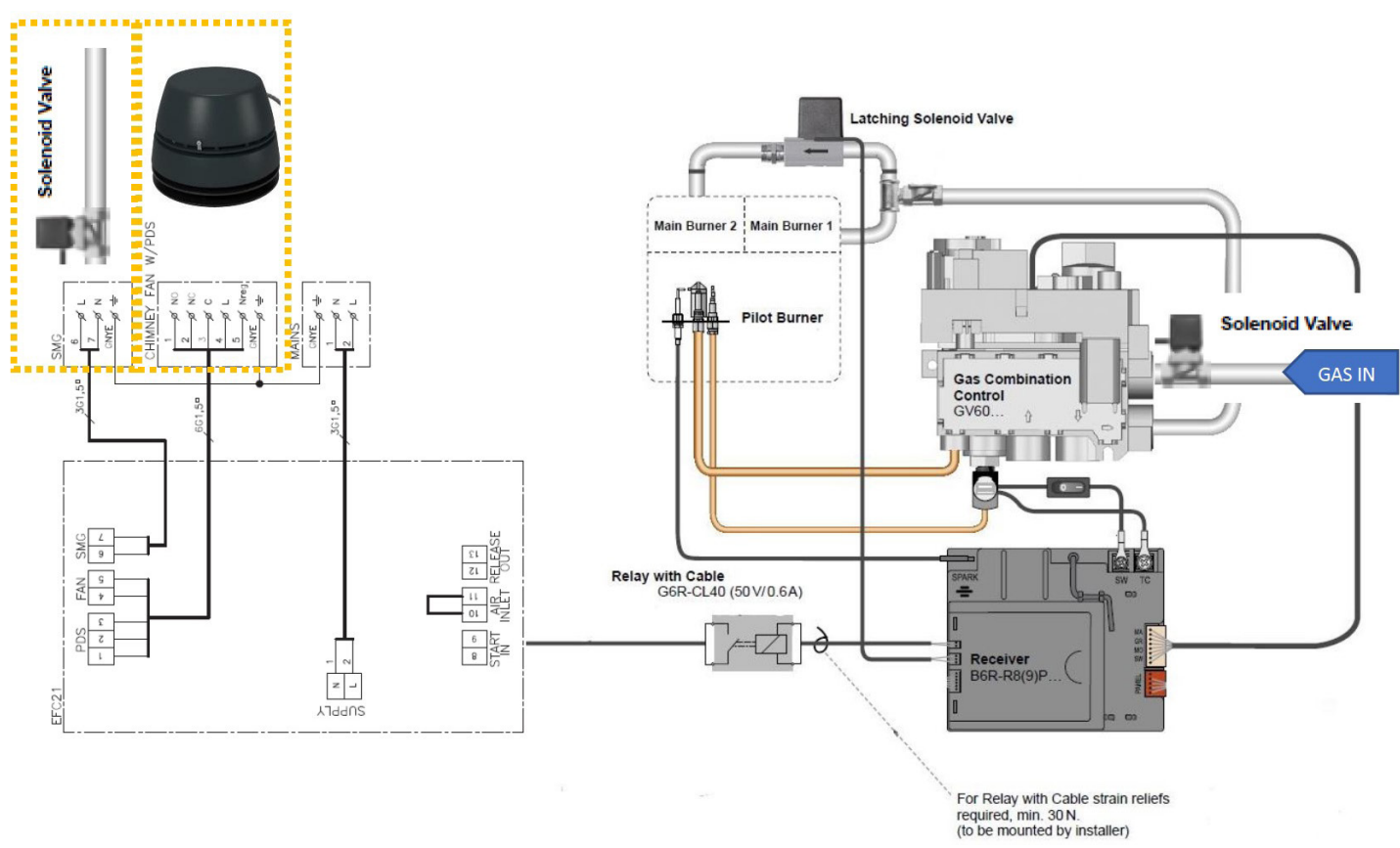
### General hints & tips:

- The chimney fan can be used when the flue run is longer than the allowed horizontal lay out (in general 3,5m for dia 100-150mm and 5,5m for dia 130-200mm calculated flue length).
- Always consult the distributor to verify correct usage and installation.
- 2 types of Exodraft chimney fans can be used:
  - RSG version for Trimline fires 63 and smaller. This fan has limited flowrate suitable for smaller designed gasfires. The RSG is only suitable for wall mounting.
  - RHGC version for Trimline fires 73 and bigger. The RHGC is suitable for wall- and roof mounting.
- Connection of the concentric flue; when having a Trimline fire with a 130-200mm connection a reduction can be made directly on top of the fire to 100-150mm. thermoCet supplies an adapter kit to connect the concentric flue to the chimney fan.
- When having long flue lay outs always be aware of condensation inside the flue system. Use proper draining.
- The Exodraft chimney fan can be connected to Symax Mertik remote control supplied with the Trimline fires using an Exodraft EFC21 control box and a Mertik G6R-CL40 relay cable.
- Make sure the Exodraft chimney fan flowrate is adjusted in such a way that the Trimline gasfire performs as designed (see Exodraft manuals). Flame picture must be stable and measured CO levels not exceeding 1000ppm. Most Trimline fires are suited with fluegas measuring probe option.





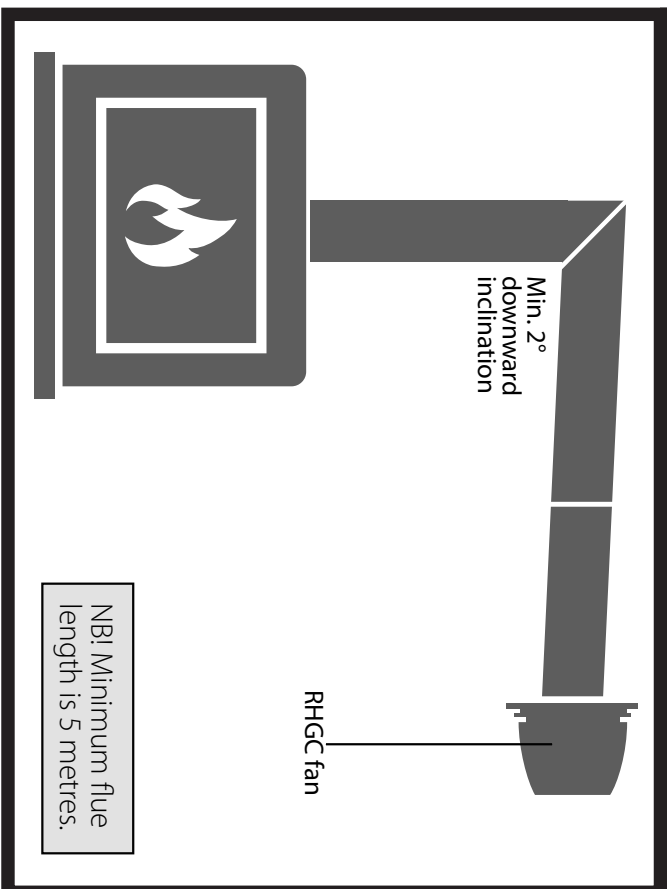
# Wiring diagram



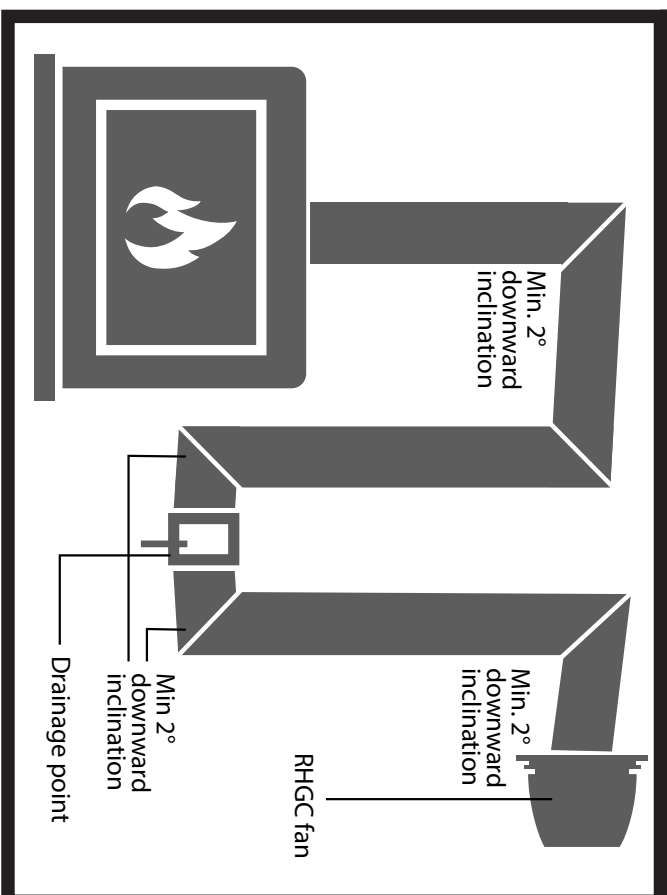


## Flue construction guidelines

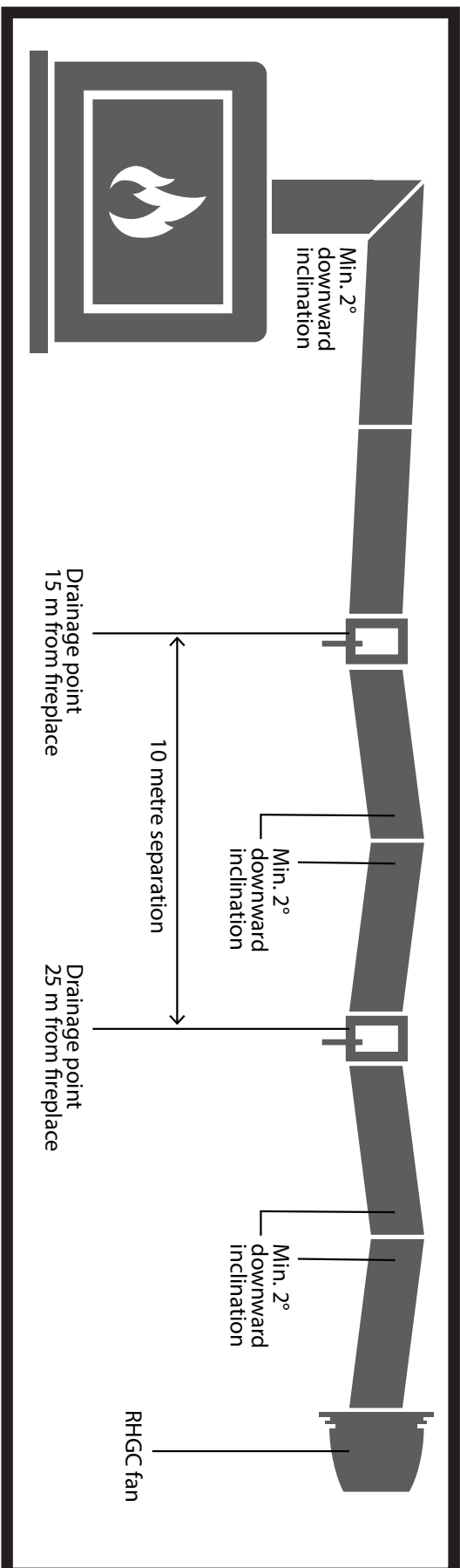
Horizontal flue sections should have a 2° (minimum) downward inclination towards the end of the flue or towards a drainage point.



If the flue runs down and up, drainage point should be positioned at the lowest point.



If the total flue length exceeds 15 metres, drainage points should be placed every 10 metres.





For further advice and calculation of your system,  
please contact our technical teams.

vision  
trimline

Visit our website for more information:  
[www.visionfires.co.uk](http://www.visionfires.co.uk)

Imperial Point  
Express Trading Estate  
Stone Hill Road  
Farnworth  
GB-Bolton BL4 9TN

General Enquiries:  
Tel: +44 (0)1204 868 550  
Fax: +44 (0)1204 868 551  
[info@visionfires.co.uk](mailto:info@visionfires.co.uk)

exodraft

Visit our website for more information:  
[www.exodraft.com](http://www.exodraft.com)

**DK: Exodraft a/s**

Industrivej 10  
DK-5550 Langeskov  
Tel: +45 7010 2234  
Fax: +45 7010 2235  
[info@exodraft.dk](mailto:info@exodraft.dk)  
[www.exodraft.dk](http://www.exodraft.dk)

**NO: Exodraft a/s**

Storgaten 88  
N-3060 Svelvik  
Tel: +47 3329 7062  
[info@exodraft.no](mailto:info@exodraft.no)  
[www.exodraft.no](http://www.exodraft.no)

**SE: Exodraft a/s**

Kalendevägen 2  
SE-302 39 Halmstad  
Tlf: +46 (0)8-5000 1520  
[info@exodraft.se](mailto:info@exodraft.se)  
[www.exodraft.se](http://www.exodraft.se)

**UK: Exodraft Ltd.**

24 Janes Meadow, Tarleton  
GB-Preston PR4 6ND  
Tel: +44 (0)1494 465 166  
Fax: +44 (0)1494 465 163  
[info@exodraft.co.uk](mailto:info@exodraft.co.uk)  
[www.exodraft.co.uk](http://www.exodraft.co.uk)

**DE: Exodraft a/s**

Niederlassung Deutschland  
Soonwaldstr. 6  
DE-55569 Monzingen  
Tel: +49 (0)6751 855 599-0  
Fax: +49 (0)6751 855 599-9  
[info@exodraft.de](mailto:info@exodraft.de)  
[www.exodraft.de](http://www.exodraft.de)

**FR: Exodraft sas**

78, rue Paul Jozon  
F-77300 Fontainebleau  
Tel: +33 (0)6 3852 3860  
[info@exodraft.fr](mailto:info@exodraft.fr)  
[www.exodraft.fr](http://www.exodraft.fr)